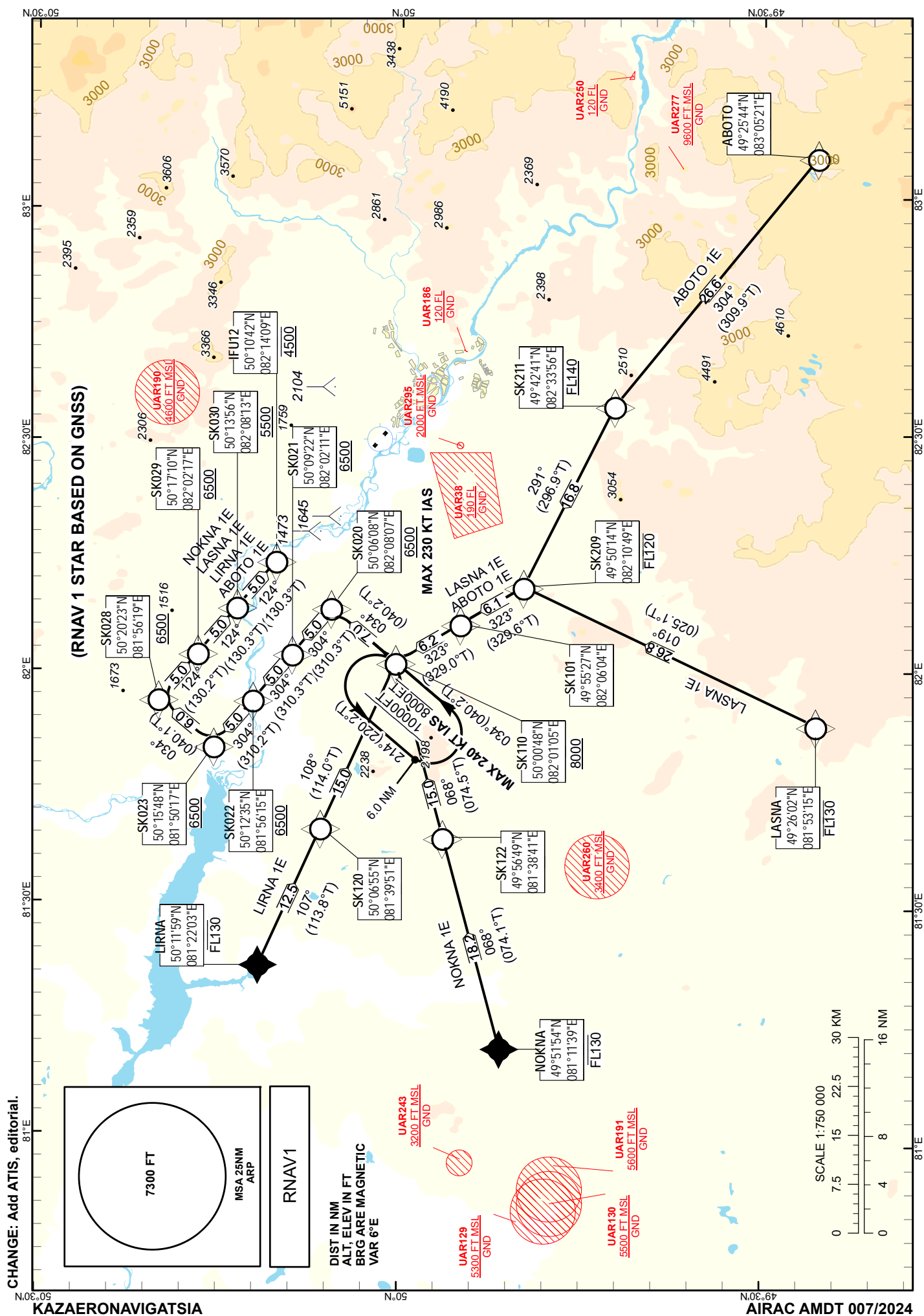


UST-KAMENOGORSK
RWY 12



TABULAR DESCRIPTION

Serial Number	Path Descriptor	Waypoint Identifier	Fly - over	Course °M(°T)	Magnetic Variation(°)	Distance NM	Turn Direction	Altitude FT	Speed KT	VPA (°)	Navigation Specification
ABOTO 1E											
10	IF	ABOTO	-	-	+6.3	-	-	-	-	-	RNAV 1
20	TF	SK211	-	304(309.9)	+6.3	26.6	R	+FL140	-	-2.1	RNAV 1
30	TF	SK209	-	291(296.9)	+6.3	16.8	L	-FL120	-	-1.7	RNAV 1
40	TF	SK101	-	323(329.6)	+6.3	6.1	R	-	-	-1.6	RNAV 1
50	TF	SK110	-	323(329)	+6.3	6.2	-	+8000	-	-1.5	RNAV 1
60	TF	SK020	-	034(40.2)	+6.3	7.0	R	+6500	-230	-2.7	RNAV 1
70	TF	SK021	-	304(310.3)	+6.3	5.0	L	+6500	-	0	RNAV 1
80	TF	SK022	-	304(310.3)	+6.3	5.0	-	+6500	-	0	RNAV 1
90	TF	SK023	-	304(310.2)	+6.3	5.0	-	+6500	-	0	RNAV 1
100	TF	SK028	-	034(40.1)	+6.3	6.0	R	+6500	-	0	RNAV 1
110	TF	SK029	-	124(130.2)	+6.3	5.0	R	+6500	-	0	RNAV 1
120	TF	SK030	-	124(130.3)	+6.3	5.0	-	+5500	-	0	RNAV 1
130	TF	IFU12	-	124(130.3)	+6.3	5.0	-	@4500	-	-2.8	RNAV 1
LASNA 1E											
10	IF	LASNA	-	-	+6.3	-	-	-FL130	-	-	RNAV 1
20	TF	SK209	-	019(25.1)	+6.3	26.8	R	-FL120	-	-2.1	RNAV 1
30	TF	SK101	-	323(329.6)	+6.3	6.1	L	-	-	-1.6	RNAV 1
40	TF	SK110	-	323(329)	+6.3	6.2	-	+8000	-	-1.5	RNAV 1
50	TF	SK020	-	034(40.2)	+6.3	7.0	R	+6500	-230	-2.7	RNAV 1
60	TF	SK021	-	304(310.3)	+6.3	5.0	L	+6500	-	0	RNAV 1
70	TF	SK022	-	304(310.3)	+6.3	5.0	-	+6500	-	0	RNAV 1
80	TF	SK023	-	304(310.2)	+6.3	5.0	-	+6500	-	0	RNAV 1
90	TF	SK028	-	034(40.1)	+6.3	6.0	R	+6500	-	0	RNAV 1
100	TF	SK029	-	124(130.2)	+6.3	5.0	R	+6500	-	0	RNAV 1
110	TF	SK030	-	124(130.3)	+6.3	5.0	-	+5500	-	0	RNAV 1
120	TF	IFU12	-	124(130.3)	+6.3	5.0	-	@4500	-	-2.8	RNAV 1
LIRNA 1E											
10	IF	LIRNA	-	-	+6.3	-	-	-FL130	-	-	RNAV 1
20	TF	SK120	-	107(113.8)	+6.3	12.5	L	-	-	-2.3	RNAV 1
30	TF	SK110	-	108(114)	+6.3	15.0	-	+8000	-	-1.3	RNAV 1
40	TF	SK020	-	034(40.2)	+6.3	7.0	L	+6500	-230	-2.7	RNAV 1
50	TF	SK021	-	304(310.3)	+6.3	5.0	L	+6500	-	0	RNAV 1
60	TF	SK022	-	304(310.3)	+6.3	5.0	-	+6500	-	0	RNAV 1
70	TF	SK023	-	304(310.2)	+6.3	5.0	-	+6500	-	0	RNAV 1
80	TF	SK028	-	034(40.1)	+6.3	6.0	R	+6500	-	0	RNAV 1
90	TF	SK029	-	124(130.2)	+6.3	5.0	R	+6500	-	0	RNAV 1
100	TF	SK030	-	124(130.3)	+6.3	5.0	-	+5500	-	0	RNAV 1
110	TF	IFU12	-	124(130.3)	+6.3	5.0	-	@4500	-	-2.8	RNAV 1
NOKNA 1E											
10	IF	NOKNA	-	-	+6.3	-	-	-FL130	-	-	RNAV 1
20	TF	SK122	-	068(74.1)	+6.3	18.2	L	-	-	-2.1	RNAV 1
30	TF	SK110	-	068(74.5)	+6.3	15.0	-	+8000	-	-1.3	RNAV 1
40	TF	SK020	-	034(40.2)	+6.3	7.0	L	+6500	-230	-2.7	RNAV 1
50	TF	SK021	-	304(310.3)	+6.3	5.0	L	+6500	-	0	RNAV 1
60	TF	SK022	-	304(310.3)	+6.3	5.0	-	+6500	-	0	RNAV 1
70	TF	SK023	-	304(310.2)	+6.3	5.0	-	+6500	-	0	RNAV 1
80	TF	SK028	-	034(40.1)	+6.3	6.0	R	+6500	-	0	RNAV 1
90	TF	SK029	-	124(130.2)	+6.3	5.0	R	+6500	-	0	RNAV 1
100	TF	SK030	-	124(130.3)	+6.3	5.0	-	+5500	-	0	RNAV 1
110	TF	IFU12	-	124(130.3)	+6.3	5.0	-	@4500	-	-2.8	RNAV 1

WAYPOINT LIST

ABOTO 1E	
Waypoint Identifier	Coordinates
ABOTO	492544.00N 0830521.00E
SK211	494241.09N 0823356.37E
SK209	495014.45N 0821048.75E
SK101	495527.06N 0820604.08E
SK110	500047.75N 0820105.13E
SK020	500607.80N 0820806.59E
SK021	500921.63N 0820211.01E
SK022	501235.16N 0815614.63E
SK023	501548.38N 0815017.45E
SK028	502023.28N 0815619.46E
SK029	501709.76N 0820216.80E
SK030	501355.92N 0820813.34E
IFU12	501041.78N 0821409.08E
LASNA 1E	
Waypoint Identifier	Coordinates
LASNA	492602.00N 0815315.00E
SK209	495014.45N 0821048.75E
SK101	495527.06N 0820604.08E
SK110	500047.75N 0820105.13E
SK020	500607.80N 0820806.59E
SK021	500921.63N 0820211.01E
SK022	501235.16N 0815614.63E
SK023	501548.38N 0815017.45E
SK028	502023.28N 0815619.46E
SK029	501709.76N 0820216.80E
SK030	501355.92N 0820813.34E
IFU12	501041.78N 0821409.08E

LIRNA 1E	
Waypoint Identifier	Coordinates
LIRNA	501159.00N 0812203.00E
SK120	500655.33N 0813950.50E
SK110	500047.75N 0820105.13E
SK020	500607.80N 0820806.59E
SK021	500921.63N 0820211.01E
SK022	501235.16N 0815614.63E
SK023	501548.38N 0815017.45E
SK028	502023.28N 0815619.46E
SK029	501709.76N 0820216.80E
SK030	501355.92N 0820813.34E
IFU12	501041.78N 0821409.08E
NOKNA 1E	
Waypoint Identifier	Coordinates
NOKNA	495154.00N 0811139.00E
SK122	495648.89N 0813840.97E
SK110	500047.75N 0820105.13E
SK020	500607.80N 0820806.59E
SK021	500921.63N 0820211.01E
SK022	501235.16N 0815614.63E
SK023	501548.38N 0815017.45E
SK028	502023.28N 0815619.46E
SK029	501709.76N 0820216.80E
SK030	501355.92N 0820813.34E
IFU12	501041.78N 0821409.08E